

## CONTACT US

### ADDRESS

Fakhriya industrial city, WareHouse  
#B10-9, Dammam, Kingdom of  
Saudi Arabia

### E-MAIL

sales@mlelecmech.com

### WEBSITE

www.mlelecmech.com

Scan QR Code  
For Information



## PRODUCT PROFILE

www.mlelecmech.com





## Who We Are

Multiline Trading is a trusted supplier and distributor of high-quality electrical products and solutions, serving a wide range of industries across Middle East Saudi Arabia , Bahrain , UAE , Qatar .Established with a vision to deliver excellence, we are committed to providing reliable, efficient, and innovative electrical components to meet the evolving needs of our customers.

With years of experience in the electrical trading sector, Multiline has built a solid reputation for integrity, professionalism, and outstanding customer service. We partner with leading international and local manufacturers to ensure our clients receive products that meet the highest standards of safety and performance.

## TABLE OF CONTENT

|                              |           |
|------------------------------|-----------|
| <b>Who We Are</b>            | <b>3</b>  |
| <b>What We Do</b>            | <b>4</b>  |
| <b>Our Feature Product</b>   | <b>8</b>  |
| <b>Product Details</b>       | <b>10</b> |
| <b>Our Major Client List</b> | <b>36</b> |

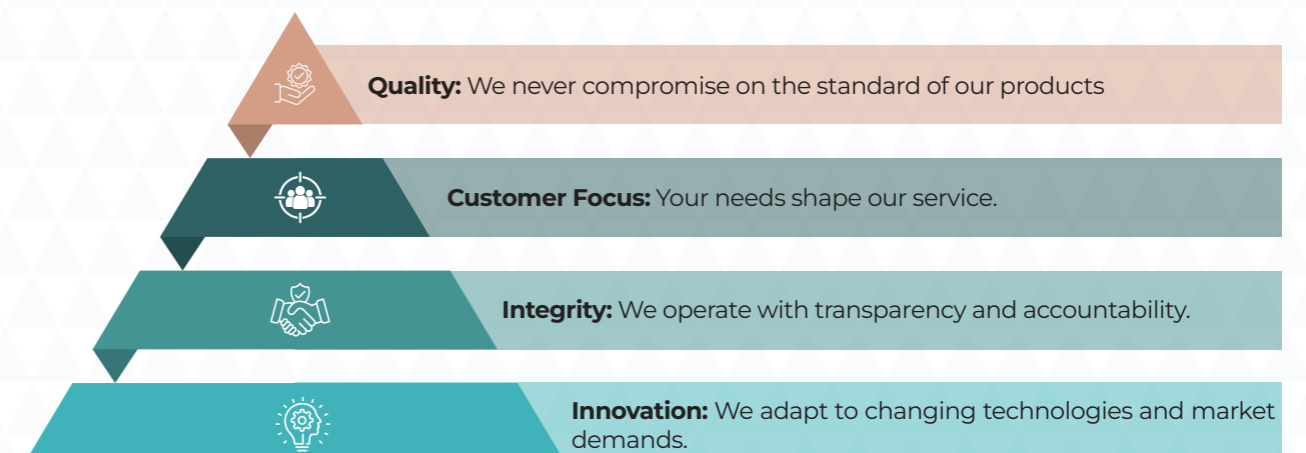
### Our Mission

To empower businesses and projects with dependable electrical solutions by delivering top-tier products, exceptional service, and value-driven partnerships.

### Our Vision

To be the leading name in electrical trading, recognized for quality, reliability, and customer-centricity across the markets we serve.

### Our Values



## What We Do

Your Trusted Partner in Electrical Solutions At MULTILINE TRADING, we specialize in providing top-quality industrial electrical components to meet the needs of industries across the board. Our extensive product range ensures reliable, safe, and efficient electrical installations.

We cater to the needs of various industries by delivering products that meet global standards of reliability, safety, and performance.

At Multiline Trading, we are a leading name in the electricals trading industry, offering a wide range of high-quality electrical products and solutions to meet the diverse needs of our clients. Founded in 2009, our commitment to excellence, reliability, and customer satisfaction has made us a trusted partner in the region.

Our mission is to deliver superior electrical products in Saudi Arabia that meet international standards, ensuring safety, durability, and efficiency. By fostering strong partnerships with top brands and clients, we aim to contribute to the success of electrical projects in Saudi Arabia and entire Middle-East as well globally.



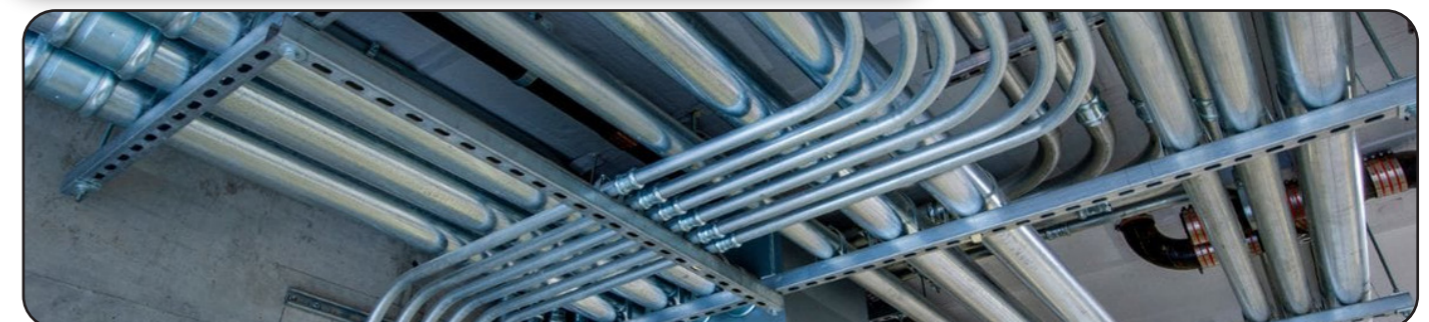
## 1. Industrial Plugs and Sockets

- High-ampere sockets (200A, 250A, 300A, etc.)
- Waterproof and explosion-proof sockets
- Three-phase and single-phase plugs and connectors
- Interlocked socket outlets 32 amp, 63 amp, 125amp



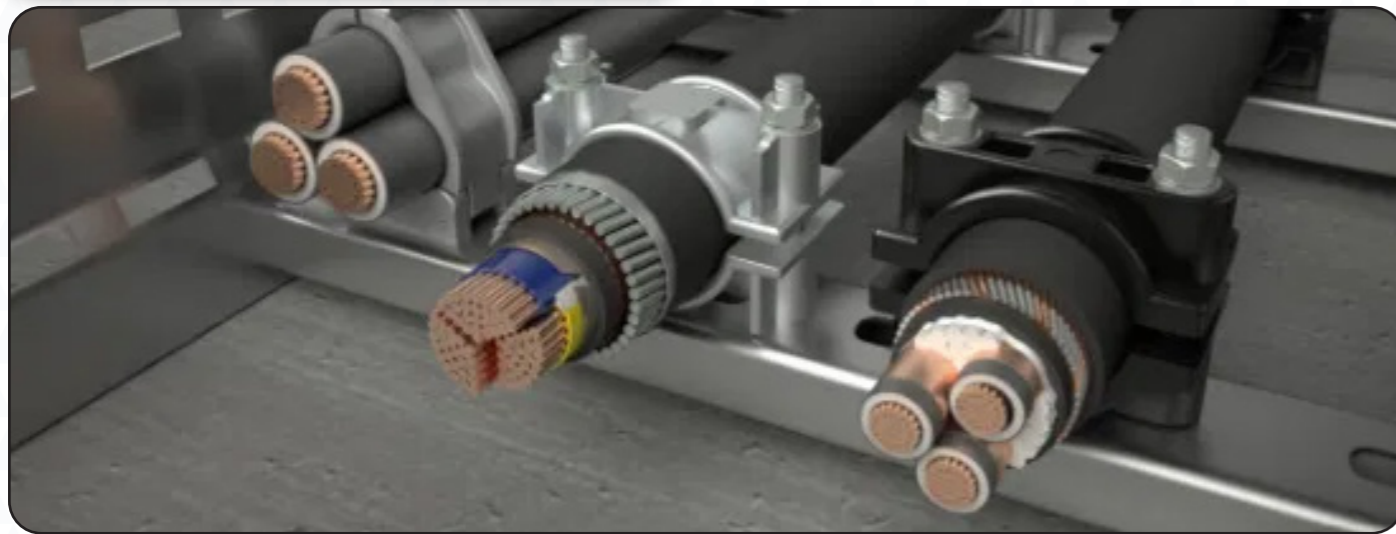
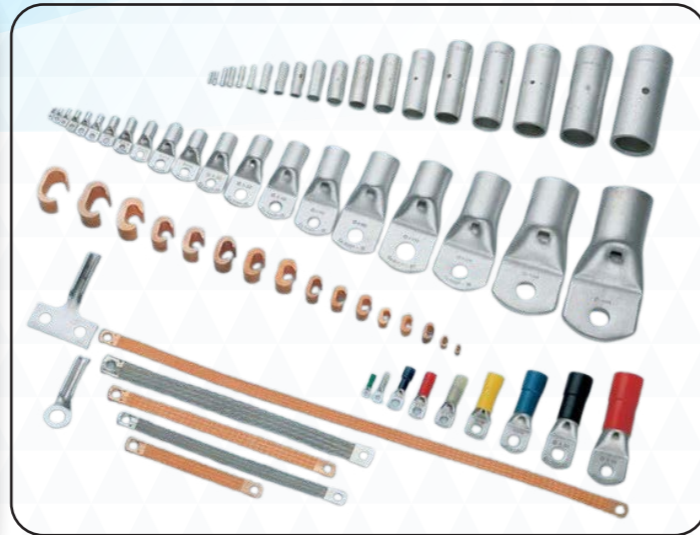
## 2. Conduits And Fittings & Cable Management

- Cable cleats, Cable ties, and trays
- Conduits and fittings
- Cable glands and lugs
- Flexible and rigid ducting systems
- EMT conduits
- RGS conduits
- RGS fitting
- EMT conduits fittings



### 3. Electrical Accessories

- Switches and sockets (residential and industrial-grade)
- Insulators and terminals
- Heat shrinks tubes and tapes
- Cable lugs
- Cable glands
- Earthing & Grounding
- Low voltage lugs
- Low voltage Receptacle & plugs



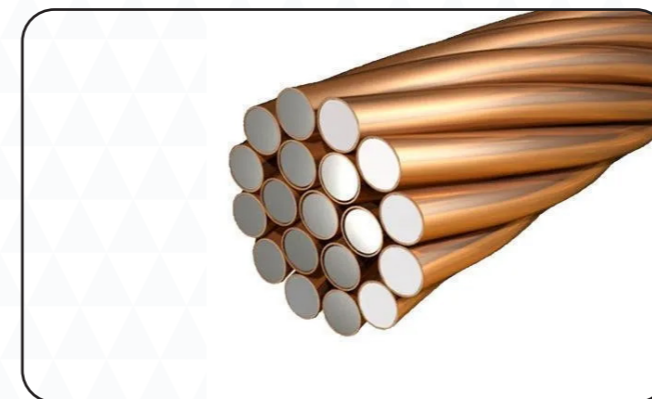
### 4. Switchgear and Control Systems

- Circuit breakers (MCBs, MCCBs, ACBs)
- Distribution boards and Panels
- Contactors and relays
- Motor control centers
- Isolator switch
- Disconnect switch



### 5. Lighting Solutions

- LED fixtures for indoor and outdoor applications
- Industrial and floodlighting systems
- Emergency and exit lights



### 6. Copper Clad Conductor

- Aluminium Clad Conductor
- Copper Clad Conductor
- All accessories for copper clad conductor
- Flexible and control cables
- Fire-resistant and halogen-free cables



# Our Feature Product

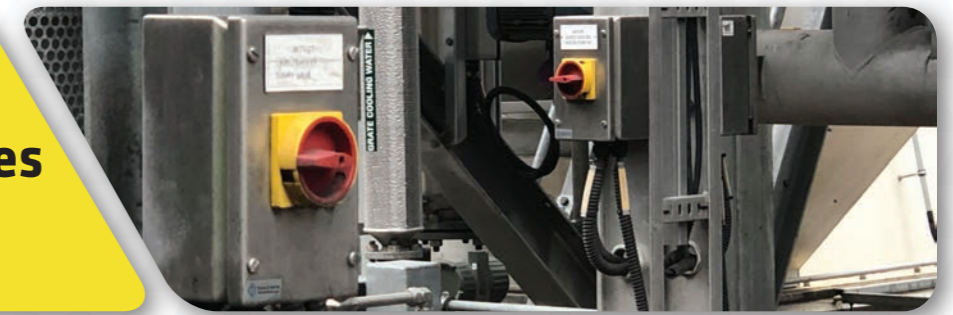
- Industrial Plugs & Socket
- Isolator & Disconnect Switch
- Conduits And Fittings
- Cable Cleat
- Cable Glands
- Electrical Insulating Mat.
- Grounding And Earthing
- British Standard Socket
- Stopaq Wrappingband Cz H Stopaq
- EMT Conduits Fittings





# Industrial Plugs & Socket

# Isolators & Disconnect Switches (20A - 600A)



## 1. Industrial Electrical Sockets: Durable and Reliable Power Solutions

High Current Plugs and Sockets are electrical connectors designed to safely and efficiently handle high currents, typically ranging from tens to thousands of amperes. They are commonly used in industrial, commercial, and specialized applications where standard household connectors would be unsafe or inadequate.

### Key Features:

#### High Ampere Rating

Designed to carry high electrical currents (e.g., 16A, 32A, 60A, 100A, 200A, 400A or more).

#### Durability

Built with rugged materials like heavy-duty plastics, brass, or copper alloys for long-term use.

#### Heat Resistance

Engineered to resist heat buildup that comes from sustained high current flow.



| Type                 | Current Rating | Application                                   |
|----------------------|----------------|---|
| IEC 60309 Connectors | Up to 125A     | Industrial machinery, construction sites      |
| Cam-Lok Connectors   | Up to 400A+    | Power distribution, entertainment, generators |
| Anderson Powerpole   | 16A to 350A    | DC systems, battery connections, robotics     |
| DIN Power Connectors | 100A+          | Railways, heavy equipment                     |
| NEMA High-Current    | 50A to 400A+   | Welders, RVs, electric vehicle chargers       |



Our range of Isolator and Disconnect Switches provides reliable, high-performance solutions for isolating electrical circuits across industrial, commercial, and residential applications. Designed to handle current ratings from 20 Amps up to 600 Amps, these switches ensure safe maintenance, repair, and operational control in low to medium voltage installations.



### Key Features:

- Current Range: 20A to 600A
- Voltage Rating: Up to 1000V AC/DC
- Pole Configurations: 1P, 2P, 3P, 4P options
- Mounting Types: DIN rail, panel, and enclosure mount
- Manual and Motorized Options available
- IP65/IP66 Enclosures for outdoor and harsh environments
- Quick Make & Break Mechanism ensuring arc suppression
- Padlockable Handles for secure lockout/tagout compliance
- Compact, Rugged Design for space-saving and durability

### Compliance & Standards:

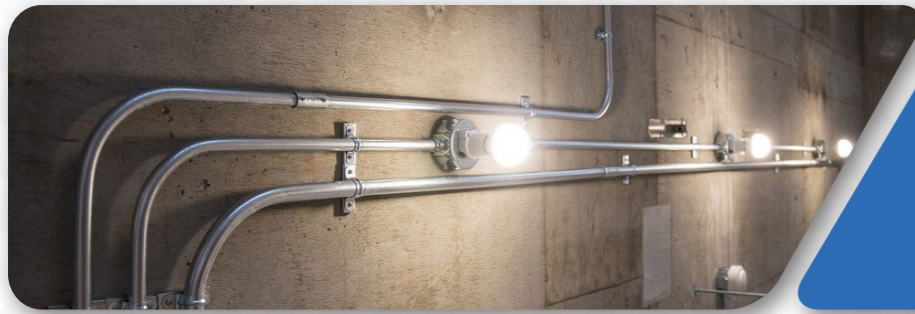
- IEC 60947-3 / BS EN 60947-3
- UL & CE certified models available
- RoHS and REACH compliant
- ATEX-rated versions for hazardous areas (optional)

### Applications:

- Industrial machinery and control panels
- Motor and HVAC system isolation
- Solar PV and battery systems
- Data centers and UPS systems
- Generator and transfer switch panels
- Commercial building power distribution

## OUR PARTNERS





## Industrial Conduits Fittings

## Industrial Conduits Fittings



### RGS Conduits and Fittings: Secure and Efficient Cable Management

Conduits and fittings are essential for protecting and organizing electrical cables in various environments. They ensure safe wiring installations by safeguarding against mechanical damage, moisture, and other environmental factors. Whether for residential, commercial, or industrial projects, our range of conduits and fittings provides durability, flexibility, and compliance with safety standards.

Conduit Fittings offer a range of advantages for customers in need of durable and reliable electrical components. These imc fittings are made from high-quality materials, ensuring long-lasting performance and resistance to corrosion. The precision engineering of OMEGA IMC Conduit Fittings ensures a secure and tight fit, minimizing the risk of electrical faults or interruptions.

### PVC Coated Conduit & Accessories

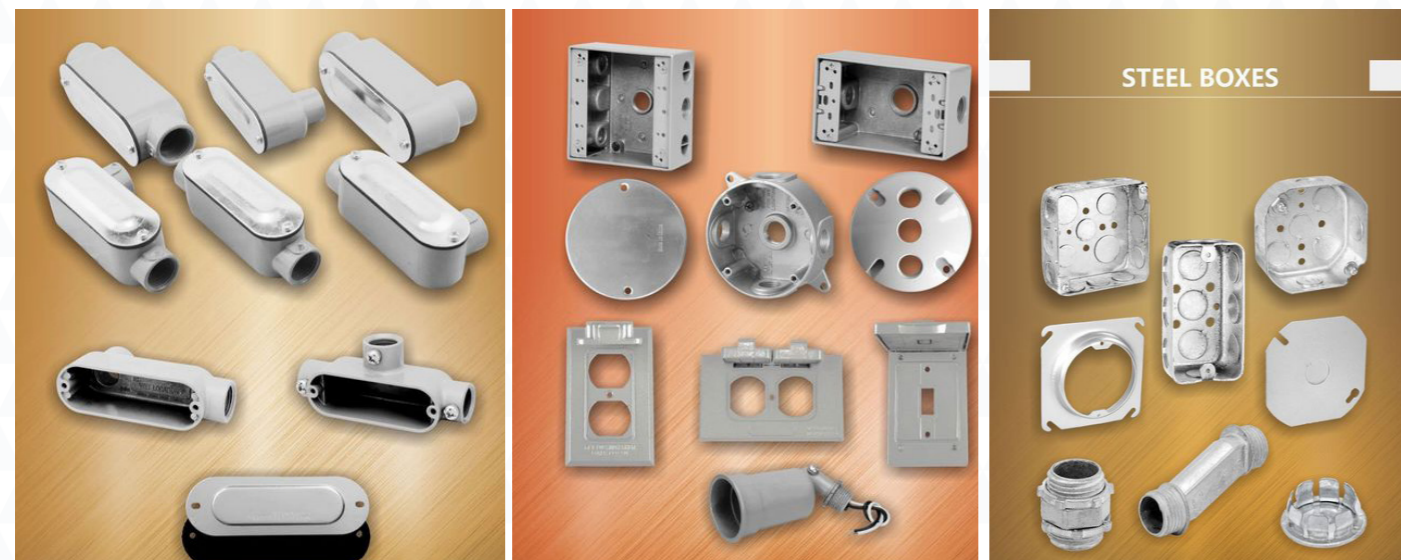
- Corrosion-resistant and non-conductive.
- Perfect for outdoor, oil & gas and underground installations.

### Applications

**Residential:** Protecting home electrical wiring.  
**Commercial:** Organizing and securing cables in offices, malls, and public buildings.

**Industrial:** Handling high-stress wiring in factories and plants.

**Outdoor:** Ensuring durable cable management in exposed environments.



### OUR PARTNERS



### Types of Conduits

#### 1. Rigid Metal Conduit (RMC)

- Made from heavy-duty galvanized steel or aluminium.
- Ideal for high-stress environments like industrial plants.

#### 2. Electrical Metallic Tubing (EMT)

- Lightweight and easy to install.
- Suitable for indoor applications and concealed wiring.

#### 3. PVC Conduit

- Corrosion-resistant and non-conductive.
- Perfect for outdoor and underground installations.

#### 4. Flexible Metal Conduit (FMC)

- Offers flexibility for areas with limited space.
- Commonly used for motor connections and machinery.

#### 5. Liquid-Tight Flexible Conduit

- Provides protection against water, oil, and chemicals.
- Suitable for outdoor or wet environments.

### Types of Fittings

#### 1. Conduit Connectors

- Used to join conduits to electrical boxes or panels.
- Available in threaded, compression, or push-in styles.

#### 2. Elbows and Bends

- Allow smooth directional changes in conduit runs.
- Offered in fixed angles or adjustable configurations.

#### 3. Couplings

- Join two pieces of conduit securely.
- Available in straight, threaded, and set-screw types.

#### 4. Bushings

- Protect cables from sharp edges at conduit ends.
- Made of plastic or metal for different applications.

#### 5. Clamps and Straps

- Secure conduits to walls, ceilings, or other structures.
- Ensure stability and prevent movement.

#### 6. Adapters and Reducers

- Transition between different conduit sizes or types.





## Industrial American Sockets and Plugs



**Powertite™ Series Plugs, Connectors and Receptacles** use our versatile pin and sleeve design to provide safe, reliable power for any type of heavy duty equipment, fixed or portable. Available in 30, 60, 100, 150, 200 and 400 Amp designs, they feature widely spaced contacts recessed within an internal arc snuffing chamber, insulating blocks, positive polarization and a durable neoprene sealing bushing. Shell only or shell plus extra pole grounding provides safe; make first, break last; grounding. Water and dust protective plug caps and locking collar to secure plug/connector connections available

**Crouse-Hinds series Arktite plugs, receptacles and connectors** are used indoors and outdoors to supply power to portable electrical equipment such as motor generator sets, compressors, heating and cooling units, welders, conveyors, lighting systems and similar equipment. Available in 20A through 400A, Arktite metallic pin and sleeve devices feature an innovative arc snuffing design that enables large power loads to be disconnected under load without causing an arc flash in the area.

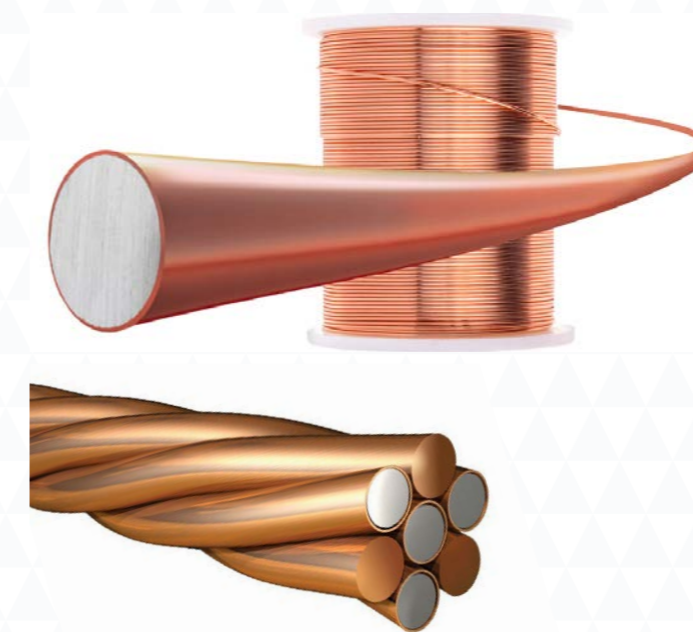
### Key Features:

- Versatile pin and sleeve design for secure electrical connections.
- Internal arc snuffing chamber and widely spaced, recessed contacts for arc protection
- Insulating blocks and positive polarization to prevent mismatching.
- Durable neoprene sealing bushing to withstand harsh environments.
- Shell-only or shell-plus-extra-pole grounding options for added safety, supporting make-first, break-last grounding principle.
- Optional accessories: water- and dust-resistant plug caps, and locking collars to firmly secure plug and connector assemblies.

### OUR PARTNERS



## Copper Clad Conductor



The **copper-clad strand wire** is shaped like a cable, which is made of a plurality of copper-clad single wires. Because of its multi-stranded properties, the electrical conductivity and tensile strength are relatively good, and the product can be customized to enhance the elongation rate by multiple heat treatment in the production process, which has increased the strength and toughness of the steel compared with the pure copper strand. Moreover, the good electrical conductivity and corrosion resistance of the copper material are maintained due to the principle of the skin effect. Therefore, it is very popular in many

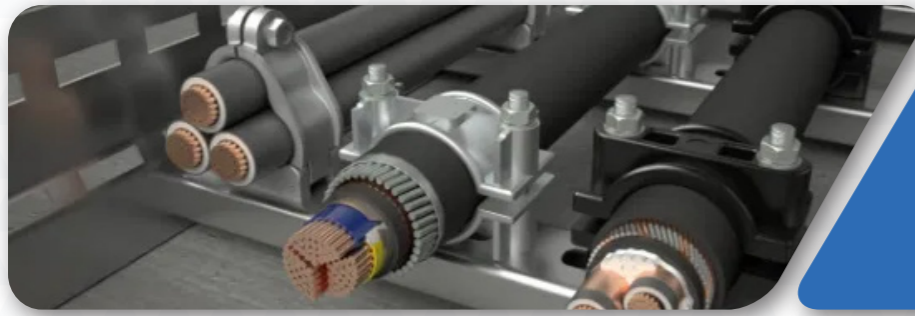
fields of lightning protection and grounding, especially in power plants, substations, high-speed rail, subways, electrified railways, large-scale chemical plants, mechanical plants, communication base stations, transportation, computer rooms, highways and military bases.

**CopperClad Composite (CCC) Conductors** provide strength and conductivity by combining hard drawn copper with 30% & 40 % conductivity EHS CopperClad Steel Wire. With its steel component, the CCC conductor achieves a higher tensile strength. Additionally, it weighs less than solid copper. Together this adds up to a minimum sag over maximum span lengths. The flexibility of CCC allows for seasonal temperature changes and stresses without permanent stretch. MLELECMECH is Prime Supplier of Copper clad in Saudi Arabia.

**CopperClad Composite (CCC) Conductors** combine hard-drawn copper with high-conductivity EHS (Extra High Strength) copper-clad steel wire — offering options with **30% or 40% conductivity**. This engineered composite enhances the conductor's tensile strength while reducing its weight compared to solid copper, making it an optimal choice for long-span installations.

### OUR PARTNERS





## Cable Cleats



A **cable cleat** is a mechanical device used to secure, support, and organize electrical cables along a designated path, such as walls, ceilings, or floors. Cable cleats are essential for preventing damage to cables, ensuring they remain in place, and maintaining proper spacing, which helps reduce the risk of overheating, electrical faults, or physical damage. They are commonly used in industrial, commercial, and residential electrical installations.

**Key Functions of Cable Cleats:** Cable Protection: Cleats help prevent mechanical damage to cables by securely holding them in place and reducing movement that might cause wear and tear on the insulation or conductors. Cable Organization: They help organize multiple cables, reducing clutter and preventing tangling or crossing, which makes the installation safer and more aesthetically pleasing.

### Types of Cable Cleats:

- **Single-Tier Cleats:** These cleats are designed to secure a single cable. They are typically used in installations where individual cable runs are required.
- **Multi-Tier Cleats:** These cleats hold multiple cables and are commonly used in areas with many parallel cable runs, helping to organize cables efficiently while ensuring they stay secured.
- **Metallic Cleats:** Usually made from materials like steel or aluminium, metallic cleats are used in high-strength applications or environments that demand additional durability, such as in power plants or factories. They are often used in high-vibration areas or for heavy-duty cables.
- **Non-Metallic Cleats:** These are made from plastic or composite materials, offering a lighter and more cost-effective solution compared to metallic cleats. They are suitable for indoor.
- **Wall Cleats:** Specifically designed to mount on walls or vertical surfaces to secure cables along a fixed path.

### OUR PARTNERS



## Cable Glands



**Cable glands** are essential components used in electrical installations to secure and protect cables as they pass through equipment enclosures, bulkheads, or machinery. They are designed to ensure a safe connection by providing strain relief, environmental sealing, and, in some cases, electrical grounding or bonding.

### Key Functions of Cable Glands

1. **Cable Retention:** Prevents cables from being pulled out of their connection points.
2. **Environmental Protection:** Provides a seal to prevent ingress of water, dust, or other contaminants.
3. **Electrical Bonding:** Ensures proper grounding or earthing, particularly for armored cables.
4. **Fire and Explosion Protection:** In hazardous environments, certain types of cable glands can prevent the passage of flames or sparks.

### Types of Cable Glands

#### 1. Material Types:

- Metal (e.g., Brass, Stainless Steel): Durable, robust, and ideal for harsh environments.

#### 2. Cable Types:

- Unarmored: For standard cables.
- Armored: Designed for cables with mechanical protection layers.

#### 3. Ingress Protection (IP) Ratings:

- IP68 or IP69-rated glands for waterproof and dustproof applications.

#### 4. Explosive Atmospheres:

- ATEX/IECEx-approved glands for use in hazardous zones.

#### Applications

Industrial automation, Renewable energy (solar panels, wind turbines), Marine and offshore

### OUR PARTNERS



BARTEC FEAM



## Cable Lugs

**Cable lugs** are essential electrical components used to securely connect cables to electrical devices, terminals, or other conductors. They ensure safe and efficient power transmission by providing a strong mechanical and electrical connection between the cable and the connection point.

### Key Functions of Cable Lugs

- **Electrical Connectivity:** Facilitates a secure and reliable electrical connection.
- **Mechanical Strength:** Provides a robust interface that resists loosening due to vibration or movement.
- **Ease of Installation:** Simplifies the termination process, especially for large or stranded cables.
- **Safety:** Minimizes the risk of arcing, overheating, or cable damage.

### Types of Cable Lugs

#### 1. By Installation Method:

- **Crimping Lugs:** Installed using a crimping tool for a permanent, high-strength connection.
- **Bolt-On Lugs:** Secured using bolts or screws, suitable for maintenance and replacement.
- **Compression Lugs:** Installed using hydraulic or mechanical compression tools for heavy-duty applications.

#### 2. By Material:

- **Copper Lugs:** High conductivity, ideal for copper cables and indoor/outdoor use.
- **Aluminum Lugs:** Lightweight and corrosion-resistant, often used with aluminum conductors.

**Bimetallic Lugs:** Designed for connecting aluminum cables to copper busbars, preventing galvanic corrosion.

#### 3. By Insulation:

- **Insulated Lugs:** Feature a plastic or heat-shrink sleeve for added protection and safety.
- **Non-Insulated Lugs:** Provide bare-metal contact.



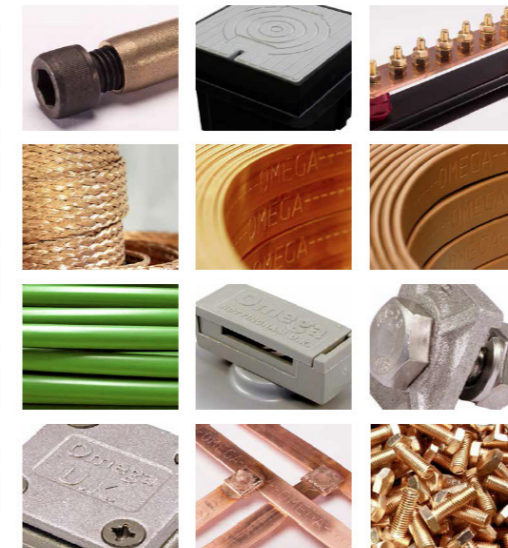
## Grounding and Earthing



**Grounding and earthing** products are vital components in electrical systems, designed to safely dissipate electrical energy into the earth. These products protect equipment, structures, and personnel from electric shock, lightning strikes, short circuits, and other fault conditions by providing a low-resistance path to ground.

### Purpose of Grounding and Earthing

- **Safety:** Protects people from electric shock by stabilizing voltage levels.
- **Equipment Protection:** Prevents damage to electrical systems and sensitive electronics.
- **Fault Current Dissipation:** Provides a safe route for fault currents, ensuring protective devices operate effectively.



**Lightning Protection:** Redirects lightning surges away from critical infrastructure.

### Common Grounding and Earthing Products

**Ground Rods (Earth Rods):** Conductive rods driven into the earth to provide a low-resistance ground path.

**Grounding Clamps and Connectors:** Securely connect grounding conductors to rods, pipes, and equipment.

**Earthing Strips and Tapes:** Used for bonding and equipotential connections in earthing networks.

**Ground Enhancement Material (GEM):** Improves soil conductivity around earth electrodes.

**Grounding Busbars:** Central grounding points for distribution of earthing connections in panels.

### Standards and Compliance

Grounding systems should comply with international and national standards such as:

**IEC 60364, IEEE 80, NFPA 70 (NEC), IS 3043 (India), BS 7430 (UK)**

### Applications

Electrical substations and power plants, Industrial and commercial buildings, Data centers and communication towers, Renewable energy systems (solar, wind) and so on.

### OUR PARTNERS



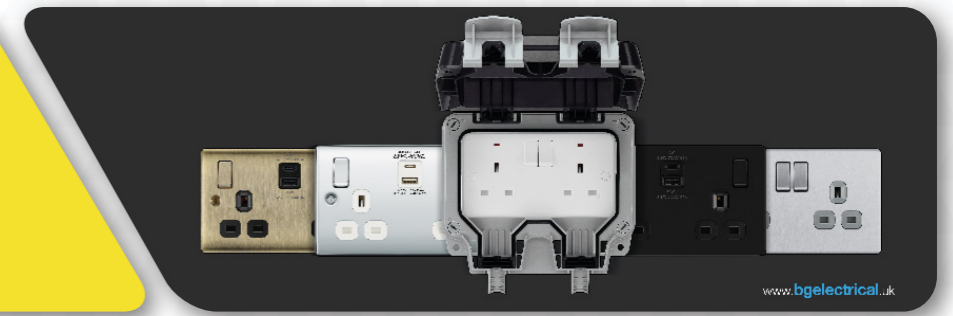
### OUR PARTNERS





# British Wiring Device

# British Wiring Device



**Metal Clad wiring accessories** are made from a rugged scratch resistant steel with a durable powder coated finish, ideal for use in commercial and industrial environments. The range comprises 10AX switches, 13 Amp sockets, fused connection units and RCD protection. All accessories are supplied with a multiple knock-out metal box, making them extremely versatile accommodating a variety of wiring routes

**British Standard sockets** are power outlets designed in accordance with UK and international standards, most notably BS 1363, the primary standard for 13A plugs, socket-outlets, and adaptors in the United Kingdom and many other regions.

We Represent BG Electrical is a leading manufacturer and distributor of high-quality innovative wiring accessories, circuit protection and portable power. With over 80 years of experience in manufacturing and distribution of electrical accessories, British General (BG) have an invaluable reputation in the industry.

BG Electrical care about your business and individual needs, from technical assistance to total customer service. To support the aesthetic creations of interior designers and different commercial and domestic purposes, there is a wide range of British General products available.

**BG Storm Weatherproof** wiring accessories are the ideal solution for managing all outdoor appliances. Storm provides full IP66 weather and impact protection; keeping you, your family, and your appliances safe! BG offer a comprehensive range of weatherproof sockets and outlets including 13A sockets, 20A switches, RCD protected devices, timer sockets, Wi-Fi range extenders, and home automation devices such as our best-selling BG Smart! socket



**13 Amp Type A RCD Protected Socket Outlet** · IP66 rated with plug in use, cover sealed · Cuts off power safely and prevent electrocution in event of a fault · Latching operation, socket returns to original state when power resumes · Supplied with multiple knock-out mounting box · Manufactured to BS 1363-2:2016+A1:2018 & BS 7288 · Type A RCD 30mA trip current, 40ms trip speed · Socket terminal capacity 3 x 2.5mm<sup>2</sup>, 3 x 4.0mm<sup>2</sup> & 2 x 6.0mm

**White Moulded Wiring Accessories** If you are looking for a simple, sleek design, look no further than our range of moulded white wiring accessories. The range is available with round or square edge profiles. The round edge gives a premium feel whilst the square edge offers exceptional value. Both come with a wide range of features and benefits and are easy to install with angled in-line colour coded captive terminals



The Future of **Commercial EV Charging**  
Introducing the All-New Pro Charger range from Sync Energy: Sync Energy proudly unveils the Pro Charger range, engineered for ease of installation and seamless user experience; our chargers are built to meet the demands of modern commercial environments.

**The 20A Series Floor box** is suitable for raised floor applications and is divided in to 3 or 4 separate removable compartments. The 20A Series floor boxes are designed for use in commercial environments and provide an efficient fast-fit on site installation and ease of access to power sockets and data.



## OUR PARTNERS





## EMT Conduits

### EMT Conduits (Electrical Metallic Tubing)

EMT conduits, or Electrical Metallic Tubing, are lightweight, thin-walled metal conduits used to protect and route electrical wiring in residential, commercial, and industrial applications. Known for their ease of installation and clean appearance, EMT is a preferred choice where mechanical protection and cost-efficiency are key.

#### Key Features

- **Material:** Typically made from galvanized steel or aluminium for corrosion resistance and

durability.

- **Lightweight & Rigid:** Thinner walls than rigid metal conduit (RMC), making EMT easier to handle and install.
- **Smooth Interior:** Facilitates easy wire pulling and minimizes cable damage.
- **Corrosion-Resistant Coating:** Ideal for indoor and dry locations; with added coatings, it can be suitable for damp or mildly corrosive environments.
- **Versatile Sizes:** Commonly available in sizes from 1/2 inch to 4 inches in diameter.

#### Advantages

- **Cost-Effective:** Less material and weight reduce costs and labor compared to heavier conduit systems.
- **Code-Compliant:** Conforms to UL 797 and ANSI C80.3 standards for safety and reliability.
- **Compatible with Compression and Set-Screw Fittings:** Supports a wide range of fitting types for secure and easy installation.
- **Non-Threaded:** Quick installation without the need for threading tools.

#### Standards & Certifications:

- UL Listed (UL 797)
- ANSI C80.3
- NEC Compliance (Article 358)
- RoHS compliant (lead-free manufacturing)

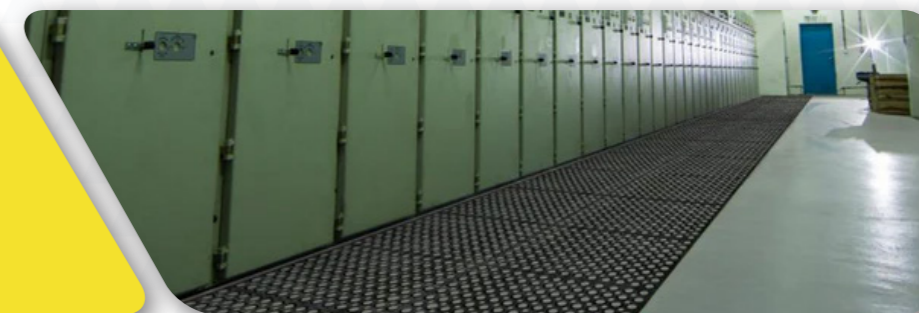
#### Applications:

- Commercial buildings (offices, retail stores)
- Residential wiring protection
- Industrial facilities
- Data centers and utility rooms

### OUR PARTNERS



## Electrical Insulation Mat



**Electrical Insulation Mats** are a critical safety solution designed to provide protection against electric shocks in high-voltage areas. These mats are widely used in electrical substations, transformer rooms, control panels, switchgear rooms, and other environments where electrical equipment is operated.

At Multiline Electrical Trading, we supply high-quality insulation mats that comply with international safety standards such as IEC 61111, IS 15652, and ASTM D178. Our mats are manufactured from premium elastomeric materials, ensuring superior electrical resistance, durability, and anti-slip properties.

#### Key Features:

- **High Dielectric Strength:** Protects personnel from electric shock by resisting current up to specified voltage levels.
- **Oil, Acid & Flame Resistant:** Suitable for use in challenging industrial environments.
- **Anti-Slip Surface:** Ribbed or checkered patterns enhance grip and reduce the risk of slipping.
- **Weather & Water Resistant:** Ideal for both indoor and outdoor installations.
- **Custom Sizes Available:** Mats can be cut to size to fit around complex layouts and equipment.

#### Available Grades:

- Class 0: Up to 1,000V AC / 1,500V DC
- Class 1: Up to 7,500V AC / 11,250V DC
- Class 2: Up to 17,000V AC / 25,500V DC
- Class 3: Up to 26,500V AC / 39,750V DC
- Class 4: Up to 36,000V AC / 54,000V DC

#### Applications:

- Electrical panels
- Substations
- Switchgear & transformer rooms
- Control rooms in industrial plants
- Commercial and residential power

### OUR PARTNERS





## Stopaq Wrapping Band

**STOPAQ Wrappingband** products are corrosion preventative wrap materials, which adhere extremely well to steel and factory or field applied pipeline coatings. They are non-toxic, cold-applied, prefabricated wrap coatings based on the pure homopolymer, Polyisobutylene, a low viscosity, non-crystalline, non-crosslinked (fully amorphous) compound.



### OUR PARTNERS



## ELASTIMOLD Splicing Kits And termination kit

**Elastimold Splicing Kits** SUPPLIER IN SAUDI ARABIA Termination Kits, Insulating Boots, Cable Box Glands, Earthing Kits, Cable Joints, End Caps Cable Breakouts, Bus Bar Tubing, Bus Bar Tapes, Insulating & Sealing Tubing, Splicing Kit: Inline, Branch, Tee. Multlines Is Major Supplier of Elastimold Product in Saudi Arab And Have Installation & Termination Team as Well.



### OUR PARTNERS



## Wiring Devices



**OMEGA** is a manufacturing and trading combination company that specializes in the design, manufacturing and marketing of a series of energy management, lighting controls and wiring devices since 2009. We utilize the most advanced technology and engineering skills to bring you the newest innovations in lighting controls and wiring devices such as: floor box, dimmers, fan speed controls, occupancy sensors, timers, receptacles, switches, locking devices, data-com devices, wall plates, etc.

OMEGA product line covers over 700 different product solutions for residential, commercial, institutional, industrial electrical and datacom applications which make us an ideal co-worker for Builders, Contractors, Specifiers, MROs and Distributors.

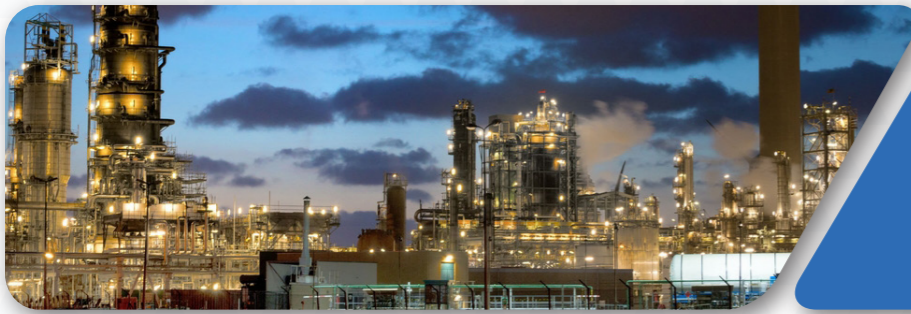
### PRODUCT CATEGORY:

- Dimmers & Fan Speed Controls
- GFCIs 20A 220V Socket
- USB Charger Receptacles
- Sensors
- Amp Sensors
- Timers
- Receptacles
- Floor Boxes
- Switches
- Straight Blade Plugs and Connectors



### OUR PARTNERS





## Explosion Proof and ATEX Series Items.

## Flexible Conduits



**FEAM BARTEC Products** and electrical equipments are covered by relevant Explosion Proof certificate and compliant to European Standards EN 50014 (general rules) 60079-14

1. Explosion Proof Lighting.
2. Explosion proof panel
3. ATEX Series Plugs and Sockets.
4. ATEX Cable Glands
5. ATEX Fitting Accessories
6. Earthing Clamp

Explosion proof enclosures, ATEX Enclosures and electrical Enclosures for over 85 years.

**Our Flameproof Enclosure EJB or BARTEC B series** is designed to be installed in industrial plants, where potential hazardous atmospheres occur.

These areas are either classified as zone 1 and 2 or as zone 21 and 22.

The flameproof enclosure EJB is designed to contain regular industrial electrical components or equipment on the mounting plate like fuses, transformers, circuit breakers, relays, PLC etc.. This enclosure can fully integrated in the hazardous area as control or distribution panel. Our flameproof enclosure EJB for hazardous areas is globally certified for use in worldwide applications and plants.

**Omega Flexible conduit** is designed to safeguard electrical wires and cables in industrial, commercial, and residential applications. Its bendable structure allows easy installation around obstacles, making it ideal for tight or complex spaces. Made from robust materials like galvanized steel, PVC, or liquid-tight polymers, it offers excellent resistance to corrosion, moisture, and physical damage. Compared to rigid conduits, it provides superior flexibility while maintaining high mechanical strength. Suitable for both indoor and outdoor use.

Flexible conduits are protective tubing systems designed to route and safeguard electrical wiring in environments that require adaptability and vibration resistance. Unlike rigid conduits, flexible conduits can bend and curve, making them ideal for installations in tight or irregular spaces.

### Features and Benefits

1. Easy installation in complex layouts
2. High flexibility for bending without special tools
3. Durable construction for long service life
4. Resistance to moisture, oil, and chemicals
5. Enhanced protection against mechanical damage



### Types Available:

1. PVC Coated Flexible Conduits – for general-purpose indoor/outdoor use
2. Metal Flexible Conduits – for higher mechanical protection
3. Liquid-Tight Flexible Conduits – for moisture-sensitive areas
4. Non-Metallic Flexible Conduits – lightweight and corrosion-resistant
5. Flexible conduits offer a reliable, adaptable, and safe solution for protecting electrical cables, ensuring performance in both demanding industrial settings and everyday commercial applications.

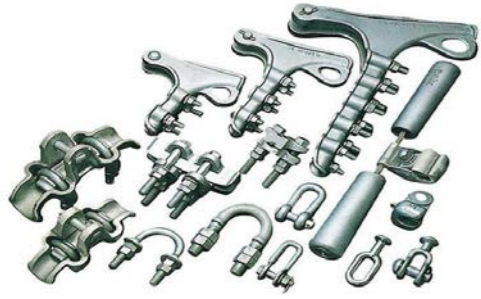
### OUR PARTNERS

BARTEC FEAM



### OUR PARTNERS





## Transmission Line Product

## Transmission Line Product



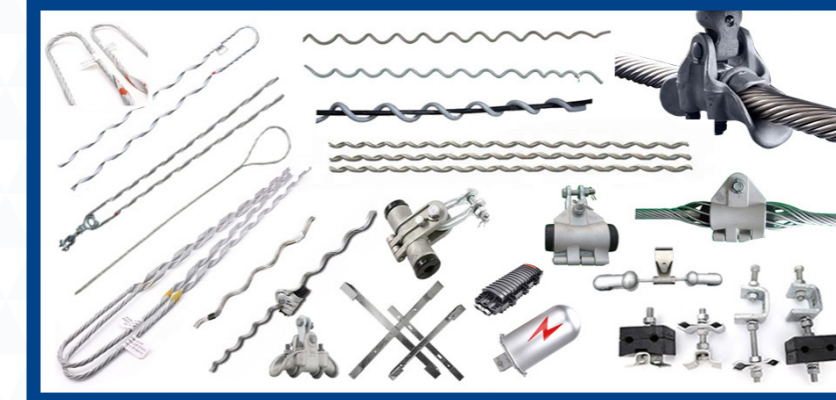
**Leading Manufacturer of - Transmission and Pole Line Hardware's Fittings, Conductor Accessories, Galvanised Fabricated Structures, Earthing's and Fasteners.**

**MULTILINE** is a **Leading Supplier of products** used by utilities for building transmission and distribution lines and substations. MPS product families include hardware and connection products as well as insulation and protection products. With global raw material sourcing capabilities, MPS produces over 10,000 items in seven domestic production facilities. The MPS business model supports local manufacturing for high service levels, diversity development programs and also sustainability and green initiatives. MPS products include: automatic splices and bolted connectors.

**Overhead Line Hardware fittings** are essential components used in the construction and maintenance of overhead power and telecommunication lines. They include a variety of steel fittings designed for hanging, fixing, protecting, and connecting conductors and insulators. These fittings ensure the stability and reliable operation of transmission lines by providing mechanical support and electrical connections.

Types of Overhead Line Hardware Fittings:

| TRANSMISSION SOLUTIONS  | DISTRIBUTION SOLUTIONS   |
|---|--|
| <ul style="list-style-type: none"> <li>• Dead-end Grips For Guy Wire</li> <li>• Distribution Dead-end Grips</li> <li>• Top Ties and Side Ties</li> <li>• HELICAL SUSPENSION CLAMPS</li> <li>• Armor Rods</li> <li>• Line Guards</li> <li>• Helical Suspension Clamps</li> <li>• ARMOR RODS &amp; LINE GUARDS</li> <li>• Termination Kit</li> <li>• Surge Arrester &amp; Fuse Cut-out</li> <li>• Aerial Electrical Fitting</li> <li>• Power Connector</li> </ul> | <ul style="list-style-type: none"> <li>• Guy Grips (HSG)</li> <li>• Spool Ties (SPT, &amp; QST-AC) Dead-end Guy Grips (DE-S)</li> <li>• Distribution Dead-end Grips (DG-AC)</li> <li>• Top Ties (DT-AC, C, F &amp; J Neck)</li> <li>• House Service</li> <li>• Formed wire</li> <li>• Power Connector</li> <li>• Line Hardware</li> <li>• Substation Fitting</li> <li>• Earthing Rod</li> <li>• Preformed Wire Fitting</li> <li>• Guy Wire Fitting</li> <li>• Insulator</li> </ul> |



### Transmission Line Equipment

Transmission line equipment is essential for the efficient and reliable transfer of electrical power from generation plants to distribution networks. Designed to handle high-voltage and long-distance power delivery, these components ensure

stability, safety, and durability in energy transmission systems.

#### Key Products & Components:

- Conductors – High-strength wires for carrying electrical current efficiently
- Insulators – Prevent leakage of current and ensure safe operation
- Tower & Pole Hardware – Clamps, bolts, cross-arms, and fittings for structural support
- Vibration Dampers – Reduce mechanical stress caused by wind-induced vibrations
- Earth Wires & OPGW – Provide grounding and communication capabilities
- Spacers & Dampers – Maintain conductor separation and reduce wear
- Line Accessories – Connectors, joints, and protective fittings

#### Applications:

- High-voltage transmission networks
- Power generation plant connections
- Grid interconnection projects

#### Features & Advantages:

- High mechanical strength and corrosion resistance
- Designed to meet international safety and performance standards

We offer Copper and Aluminium Tubular Busbars in a range of sizes, as well as the accessories to suit 33kV, 66kV and 132kV substations.

### OUR PARTNERS





## Single and Multiple Gas Detector

## Fixed Gas Detector



The Senko SGT-P is a single gas serviceable detector designed to detect presence of Hydrogen / H<sub>2</sub> gas in the ambient environment.

When activated, SGT-P continuously monitors ambient air for the presence of a specific gas and alerts the user to potentially unsafe exposure with LED, vibrating, and audible alarms in the event that gas concentration exceeds alarm set points.

### MGT-P MULTI GAS

#### Senko MGT P Multi gas detector

Senko MGT-P 4-GAS

The MGT P is a three sensor/four channel multi gas detector. It will detect Flammable gases (using a catalytic pellistor sensor), hydrogen sulphide, carbon monoxide and oxygen deficiency and enrichment. Its highly efficient li-Ion rechargeable battery provides a run time of up to 25 hours from a single charge.

**Sensor(s): O<sub>2</sub>, H<sub>2</sub>S , CO and LEL ( cat.)**

The Senko SGT-P is a single gas serviceable detector designed to detect presence of Hydrogen / H<sub>2</sub> gas in the ambient environment.

When activated, SGT-P continuously monitors ambient air for the presence of a specific gas and alerts the user to potentially unsafe exposure with LED, vibrating, and audible alarms in the event that gas concentration exceeds alarm set points.

#### Key Features:

- Sensor and Battery Replacement
- Power on / off available
- Configuration via exclusive IR Link
- Excellent water / dust proof structure
- Automatic checking of the sensor trouble

#### Quick specs:

- Sensor type: Electrochemical
- 90dB at 10cm Audible alarm
- Red Flashing LEDs warning lights
- Rubber enclosure housing
- Size and weight: Size: 54mmx 91mm x 32mm / 104g
- H<sub>2</sub> 0 – 1000 ppm range
- Range 5ppm

SENKO`s wide product range of portable and fixed detection system ensures maximum efficiency and productivity by providing the equipment that meets the highest safety standards and long-term cost of ownership for the customer.

SI-100C is a simple and non-display fixed gas detector installed in a place where potential gas hazard occurs to measure oxygen and detect toxic gas and combustible gas. Offering an analog 4-20mA in an IECEx and ATEX approved flame proof robust enclosure rated IP65 housing. Ideal aluminum and stainless-steel enclosure structure for RFI and EMC compatibility.



#### Key Features:

- Explosive proof structure
- Water/dust proof structure
- 4-20mA analog outputs
- Built-in Calibration Mode
- 2 wires for toxic gases / 3 wires for combustible gases
- Low cost and Reliable

#### Quick specs:

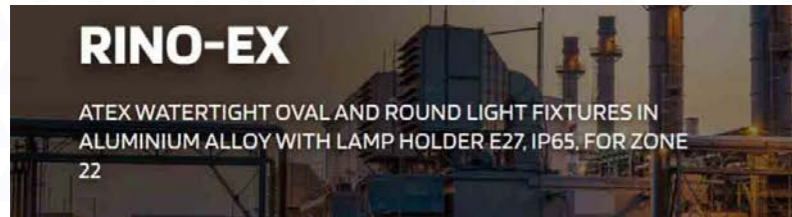
- sensors :O<sub>2</sub>, CO , SO<sub>2</sub>, H<sub>2</sub>, H<sub>2</sub>S , NH<sub>3</sub> and LEL
- Water and Dust Resistance
- Warranty: 2 years
- 4-20mA DC(3wire for combustible gas, 2wire for other gas)
- Diffusion type
- 9~34Vdc 600mA
- Size and weight: 102(W) × 137(H) × 87(D)mm 1.0kg



## Palazzoli Lighting



**RINO-EX ATEX** watertight oval and round light fixtures in aluminium alloy are suitable for applications in explosion hazardous areas as defined in ATEX Directive 2014/34/EU. The steel wire protection cage is coloured in RAL 2011 deep orange and is attached to the body by means of stainless steel screws while the sealing is guaranteed by a reinforced gasket in non-ageing elastomer. The body of the light fixture is treated with ecological anti-corrosion passivation with fluoro-zirconium and finished with hot polymerised scratch-resistant non-toxic non-ageing polyester painting.



### RINO-EX

ATEX WATERTIGHT OVAL AND ROUND LIGHT FIXTURES IN ALUMINIUM ALLOY WITH LAMP HOLDER E27, IP65, FOR ZONE 22



**META150 pendant light fixtures** in aluminium alloy ensures lighting and mechanical characteristics specifically requested for the installation in industrial, retail and sports environments as well as in the food industry. These light fixtures can achieve an efficiency up to 150 lm/W.

The body is made of die-cast aluminium with anti-corrosion treatment, finished with a scratch-resistant powder coating.

The diffuser, made of extra-clear tempered glass with 4mm thickness, guarantees maximum resistance in harsh environments with chemical substances. The polycarbonate diffuser makes the appliance suitable for use in food industries that comply with HACCP standards.

**Palazzoli**  
SISTEMI ELETTRICI E LUCE D'AUTORE



**RINO watertight LED light fixtures** are made of a single piece of AISI 304 stainless steel without welded joints, and use specialist lenses which enables the anti-glaring behaviour (glare index of UGR<22). RINO made of stainless steel are designed for use in harsh environments where a relevant mechanical resistance is required. The product with glass diffuser and with the diffuser in polycarbonate are IP66 rated (IP as per IEC/EN 60529).



### DARWIN

**Floodlights in aluminium alloy** from 60000lm up to 190000lm, IP66

Range of floodlights designed to provide optimal solutions for sports, road, and parking tower lighthouses.

The body is made of die-cast aluminium alloy for the best resistance even in harsh environments. The diffuser is made of 4mm thick, tempered, extra-clear flat glass, resistant to impacts and UV rays.

The compact and modular solution allows achieving high luminous flux solutions, up to 195,000 lm, with an efficiency of 162 lm/W.



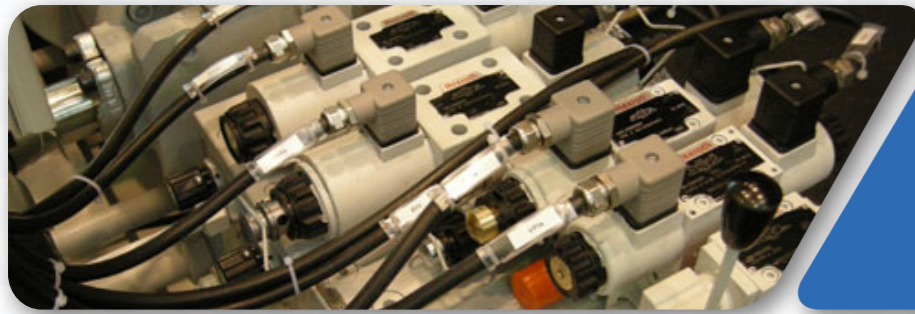
**TIGUA LED floodlights** in aluminium alloy are suitable for harsh environments and their colour rendering is ensured by the use of light sources with CRI>80.

The use of flicker-free power supplies and the latest generation LEDs enables Tigua LED to achieve an efficiency >110lm/W. Tigua is equipped with a connector for a quick connection to the electric grid, without opening the unit; at the same time, it is compact and easy to handle thanks to its 6,5 kg only.



### RINO-EX

**High efficiency ATEX LED light fixtures** in stainless steel from 3000lm up to 10000lm, IP66, for zones 2, 21, 22



## ILME INDUSTRIAL MULTIPOLE CONNECTOR

## PRESSURE TRANSMITTER AND FLOW METER



**ILME** Rectangular  
Multipole Connectors

MLELECMECH is Exclusive distributor For ILME product in Saudi Arabia, and Multline Trading is an one of biggest supplier in Saudi Arabia for Multiple pole connector. Heavy Duty Power Connectors Enclosures of the modular industry connectors of ILME are available with different combinations of materials, each suitable for a specific application. Normal environmental conditions, high-temperature environments, aggressive environments, as well as environments that require electromagnetic compatibility.

- Ethernet connectors
- Plug & socket connectors
- Heavy duty electrical connector
- Cable Connectors
- Circular Connectors
- Hybrid Connectors



General Purpose Pressure, Differential Pressure and Temperature Switches. Hazardous Location Pressure, Differential Pressure and Temperature Switches, Pressure & Temperature Switches for the OEM Temperature Sensors, Electronic Pressure, Differential pressure and Temperature Products. VEGA is a global manufacturer of sensors for Measuring Level, Point Level, Pressure Pressure Switches, and Sensors, Flow Switches, Temperature Switches and Sensors for military, aerospace and semiconductor industry.



- **General Purpose Switches**
  - Pressure, Differential Pressure, and Temperature Switches
  - Designed for stable performance across a wide range of industrial environments
- **Hazardous Location Switches**
  - Certified pressure, differential pressure, and temperature switches for use in explosive or high-risk zones
  - Built to meet stringent safety and compliance standards
- **OEM Pressure & Temperature Switches**
  - Compact and customizable solutions for original equipment manufacturers (OEMs)
  - High reliability in mission-critical application

### OUR PARTNERS



### OUR PARTNERS





Specialists in Leak Detection

## WATER LEAK DETECTION & WATER NETWORK

HWM incorporates the successful product ranges of Palmer, Radcom and Radio-Tech to produce some of the world's most advanced, accurate and easy to use wireless monitoring and measuring equipment.

Our manufacturing facilities and head office are based in the UK, with a sister company ASL based in Northampton. We also have offices in the USA (where we are known as FCS) and in China.

- **Water Network Monitoring** - Flow, pressure, and other parameters, battery powered telemetry monitoring, pressure control and leak detection
- **Waste Water Monitoring** - Level, flow, and other parameters monitoring via Intrinsically Safe (ATEX) rated battery-powered telemetry
- **Gas Network Monitoring** - Network monitoring, Regulation station monitoring, flow monitoring via Intrinsically Safe (ATEX) rated battery-powered telemetry
- **Automatic Meter Reading** - Water, Gas, Electricity
- **Facilities Optimisation** - Energy monitoring, Building performance, Temperature, Humidity, CO2 Legionella compliance, lab facilities monitoring.

| OUR PRODUCTS   | WATER NETWORKS     | WASTE WATER    |
|--|--------------------|----------------|
| We are experienced and respected manufacturers of monitoring and telemetry equipment for water, wastewater and gas networks, together with telemetry AMR and facilities optimisation products. | LEAK DETECTION >   | FLOW >         |
|  | PRESSURE CONTROL > | LEVEL >        |
|  | DATA LOGGING >     | DATA LOGGING > |
|  | WATER QUALITY >    |                |

|   |   |   |
|---|---|---|
|  |  |              |
| <b>PermaNET SU</b><br>LTE-M and NBloT-enabled Correlating Noise Logger              | <b>PermaNET+</b><br>Award-winning, NBloT-enabled correlating leak noise logger      | <b>PermaNET TM GPS</b><br>Multi-Parameter Trunk Main Leak Detection with GPS Time Synchronisation |

## Major Client List

| Company   | Vendor No. |
|---|------------|
|  SAUDI ARAMCO                            | 10043319   |
|  SAUDI ELECTRICITY CO.                   | 2005534    |
|  Marafiq                                 | 3769       |
|  SATORP (ARAMCO JUBAIL )                 | 10622      |
|  SADARA (Aramco )                       | 10043319   |
|  GENERAL AUTHORITIES OF CIVIL AVIATION | B114       |
|  SABIC                                 | 507796     |
|  Yasref                                | 100909     |
|  FARABI                                | 101739     |
|  CHEMONOL                              | 3391       |
|  ROYAL COMMISSION                      | RCJ000805  |

OUR PARTNERS

